

**symo<sup>®</sup>**



# CAPE WOOD

CREATING PARASOLS FOR PROFESSIONALS

[www.symoparasols.com](http://www.symoparasols.com)

# CAPE WOOD

## Technical details

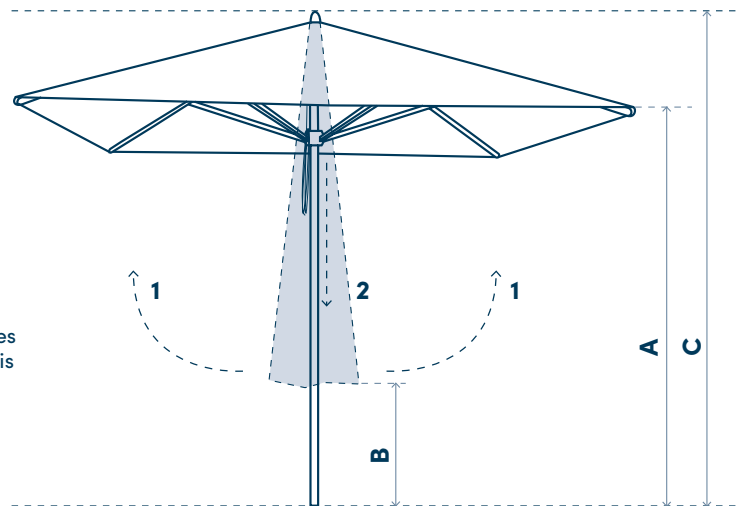
### AUTOLIFT SYSTEM (PATENTED)







#### 1. To open the umbrella

One simply lifts umbrella's arms until the Autolift system takes over, lifting the umbrella until it is fully open. No holding pin is required as the hub locks into place automatically.

#### 2. To close the umbrella

One simply pulls down on the hub until the Autolift system takes over and closes the umbrella.



		PULLEY	AUTOLIFT	PULLEY	AUTOLIFT	PULLEY	
<b>PARASOL</b>		Ø 4 m	Ø 4 m	2 x 2 m	3 x 3 m	3,5 x 3,5 m	
<b>Shape</b>							
<b>Dimensions</b>	A - Free height open	185 cm	217 cm	202 cm	203 cm	215 cm	
	B - Free height closed	53 cm	54 cm	110 cm	42 cm	30 cm	
	C - Total height	253 cm	257 cm	263 cm	257 cm	283 cm	
	Net weight	21,5 kg	20 kg	10 kg	19 kg	22,5 kg	
	Brut weight	26,5 kg	25 kg	15 kg	24 kg	27,5 kg	
	Packaging size	275 x 27 x 27 cm				380 x 36 x 30 cm	
	Shade area (m <sup>2</sup> )	+/- 12,50 m <sup>2</sup>		4 m <sup>2</sup>	9 m <sup>2</sup>	12,25 m <sup>2</sup>	
<b>Fabric</b>		Fabric colours					
		Orchestra: see colours on fabrics sheet					
	Fire retardant	•	•	•	•	•	
<b>Frame</b>	Pole	Ø 48 mm					
	Pole Material	Natural eucalyptus wood frame + polished diecast aluminium hub					
	Handle	Pulley system	Autolift system	Pulley system	Autolift system	Pulley system	
	Ribs 35 x 20 mm	-	-	8	-	-	
	Ribs 40 x 20 mm	8	8	-	8	8	
<b>Wind resistance</b>	7 Bft (61 km/h - 28 mph)						

## BASES

### CONCRETE BASE 42 kg ( for size 2 x 2 m)

- Base vibrated concrete grey
- Ø 55 cm, 8 cm high
- Upstand steel with silver epoxy coating
- 22 cm high hand grips aluminium



### GROUND PLATE LUXURY 17 kg

- 40 x 40 x 1 cm
- 3 separate anti rust treatments
- Must be screwed to the ground

Base options 2-4-5



### CONCRETE BASE 60 kg ( for all sizes)

- Base vibrated concrete grey
- Ø 65 cm, 10 cm high
- Upstand steel with silver epoxy coating
- 22 cm high hand grips aluminium



### INGROUND SLEEVE LUXURY

- 3 separate anti rust treatments
- Must be concreted into the ground

Base options 2-4-5



### LUNA 30 kg

- 60 x 60 cm / 10 mm steel
- With pole protection
- Sandblasted, metallized and powder coated

#### Colours

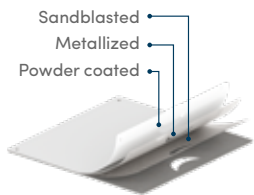
White RAL 9010 - Black RAL 9005

Base options 4-6



### TOP QUALITY

3 treatments for longer life span in heavy duty circumstances



### TILE BASE LUXURY 140 kg

- 89 x 89 x 12,5 cm
- 8 tiles 40 x 40 cm
- 3 separate anti rust treatments

Base options 1-2-3-4-5



### TILE BASE LUXURY 200 kg

- 89 x 89 x 17,5 cm
- 12 tiles 40 x 40 cm
- 3 separate anti rust treatments

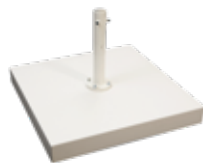
Base options 1-2-3-4-5



## BASE OPTIONS

### 1 - COVER PLATE FOR TILE BASE

- 140/200 kg
- 90.4 x 90.4 x 10.9 / 14.9 cm
  - 18 kg, 2mm steel



### 4 - ANY RAL COLOUR



### 2 - ANTI-THEFT SCREW AND KEY



### 5 - TILTING DEVICE



### 3 - 4 CASTORS FOR TILE BASE

With brakes



### 6 - 4 CASTORS FOR LUNA

2 with brakes





Quaseo



Symo LED lighting  
 - powered by battery or mains current  
 - RGB or white light



Protective cover Ripstop®



**symo**®

CREATING PARASOLS FOR PROFESSIONALS

Industriepark Z3 Waggelwater  
 Dirk Martensstraat 13 - 8200 Brugge (Belgium)  
 T 32 (0) 50 32 07 95  
 info@symoparasols.com  
[www.symoparasols.com](http://www.symoparasols.com)

